

Tameside Serious Violence Strategy 2024-2029



Foreword

Welcome to Tameside's Serious Violence Strategy, which describes the work that will take place in the coming years to reduce and prevent serious violence across the borough.

This document describes some of the key issues around serious violence in Tameside, including who is at greater risk. It also sets out the priority areas of work across partner agencies to tackle these issues.

Tameside's Serious Violence Strategy makes commitments across all of the specified authorities, to take long term approaches to tackle the root causes and risk factors of serious violence. Preventative and early-intervention approaches will be central to this, alongside ensuring ongoing conversations with communities across Tameside to inform the approaches being taken.

This strategy outlines some of the key issues around the extent of serious violence in Tameside and the priority interventions and steps needed, working with communities, to both prevent and respond to incidents of serious violence in Tameside to meet the Serious Violence Duty.

My thanks to all partners responsible for delivering this strategy and meeting the Serious Violence Duty across Tameside. I look forward to working with you all over the next few years to prevent many of the serious violent offences we see today, and their consequences, by intervening early and taking preventative approaches.



Councillor Vimal Choksi MBE
Executive Member (Towns and Communities)

The Serious Violence Duty requires the following specified authorities within a local government area to collaborate and plan to prevent and reduce serious violence

Police

- Chief Officers of police for police areas in England and Wales

Justice

- Probation Services
- Youth Offending Teams

Fire and Rescue

- All fire and rescue authorities operating in England and Wales

Health

- Integrated Care Boards in England

Local authorities

- A district council
- A county council in England.

Contents

Introduction	5
Defining Serious Violence in Tameside	6
Tameside’s Definition and Scope	7
Greater Manchester Violence Reduction Unit	7
Governance for the Partnership Approach to Serious Violence in Tameside.....	8
Key Drivers of Serious Violence in Tameside	10
Tameside Priorities: Tackling Serious Violence	12
Priority 1: Community-Led Approach	13
Priority 2: Early and Timely Intervention	13
Priority 3: Partnerships for Change	14
Priority 4: Equality, Equity and Justice	15
Priority 5: Trauma Responsive Support for Communities in Tameside	15
References	17

Introduction

This Serious Violence Strategy for Tameside explains the steps that will be taken across the borough to reduce and prevent serious violence over the next five years.

There are a group of ‘specified authorities’ which are responsible in every area for developing and delivering this strategy. In Tameside, these are:

- Tameside Council
- Greater Manchester Police (GMP)
- Greater Manchester Fire and Rescue Service (GMFRS)
- Probation Services
- Youth Offending Services
- NHS Greater Manchester Integrated Care Board (NHS GM ICB)

In January 2023, the Government introduced a statutory duty, known as The Serious Violence Duty. This requires “specified authorities for a local government area to work together and plan to prevent and reduce serious violence, including identifying the kinds of serious violence that occur in the area, the causes of that violence, and to prepare and implement a strategy for preventing, and reducing serious violence in the area”.

This new duty for local areas is part of the government’s Serious Violence Strategy, which was published in April 2018 in response to increases in knife crime, gun crime and homicide across England. The strategy calls for local partners to work together across different sectors including the police, local authorities, health services and the voluntary sector to adopt a multi-agency approach to reduce serious violence in their area, which is further reinforced by the new Serious Violence Duty.

The Serious Violence Strategy for Tameside uses a public health approach to tackling serious violence by treating this as a preventable health issue and identifying and addressing the root causes and risk factors. This approach shifts the focus from solely law enforcement and criminal justice responses to a broader range of issues including social, economic, and environmental factors. Tameside’s Serious Violence Strategy has been developed in partnership with Greater Manchester’s Violence Reduction Unit and is designed to complement the Greater Manchester Greater Than Violence strategy. The priorities and approaches that have been put forward are also evidence based, drawing on the findings and recommendations in the 2023 Serious Violence Strategic Needs Assessment for Tameside.

Nationally, serious violent offences make up around 1% of all crime recorded by the police. However, these offences cause some of the most serious harms to individuals, communities and societies. Violence and fear of violence can affect every member of Tameside’s communities and occurs in multiple scenarios, contexts and situations.

Defining Serious Violence in Tameside

Serious violence is the intentional use of physical force or power, threatened or actual, against oneself, another person, or against a group or community that either results in or has a high likelihood of resulting in injury, death, psychological harm, maldevelopment, or deprivation.

World Health Organisation



Tameside's Definition and Scope

Adopting the same definition as the World Health Organisation; in Tameside the agreed definition of serious violence is, "...the intentional use of physical force or power, threatened or actual, against oneself, another person, or against a group or community that either results in or has a high likelihood of resulting in injury, death, psychological harm, maldevelopment, or deprivation." (WHO, 2002). It has been agreed that the following crime types should be included in the definition of serious violence within Tameside: self-harm and suicide, all homicide types, violence with injury, weapon-related crime, personal robbery, modern-slavery, domestic abuse, sexual violence and violence against women and girls.

Whilst this strategy and the Tameside Serious Violence Needs Assessment encompass the above crime types, it should be noted that, given the broad scope of issues within this strategy, there are links to the following Tameside strategies throughout both documents, which focus on related topic areas in more detail:

- [Joint Health & Wellbeing Strategy and Locality Plan 2023-2028](#)
- [Domestic Abuse Strategy 2021 - 2026](#)
- [Community Safety Strategy 2021 - 2025](#)
- [Tameside Suicide Prevention Strategy 2019 - 2023](#)
- [Building Resilience Tackling Poverty in Tameside 2023-2027](#)

This strategy aligns to the ambitions of the above strategies and the ongoing monitoring, progress and governance which sits around these.

Greater Manchester Violence Reduction Unit

The Greater Manchester Violence Reduction Unit (VRU) has taken a lead role across the Greater Manchester region in work to reduce violence and tackle serious violence. In 2020 the VRU published an action plan for tackling serious violence in GM, however in light of the new Serious Violence Duty, the VRU has recently undertaken a strategic needs assessment of serious violence and has published a new serious violence strategy for Greater Manchester - Greater Than Violence: A ten-year strategy for preventing and reducing violence. This strategy sets out five key principles and a series of commitments under each, to harness opportunities to prevent and reduce serious violence across the wider Greater Manchester system.

The partnerships in Tameside and the specified authorities within the borough work closely with the GM VRU, and this strategy aligns closely to the GM strategy, while also highlighting the specific areas of focus for Tameside.

Governance for the Partnership Approach to Serious Violence in Tameside

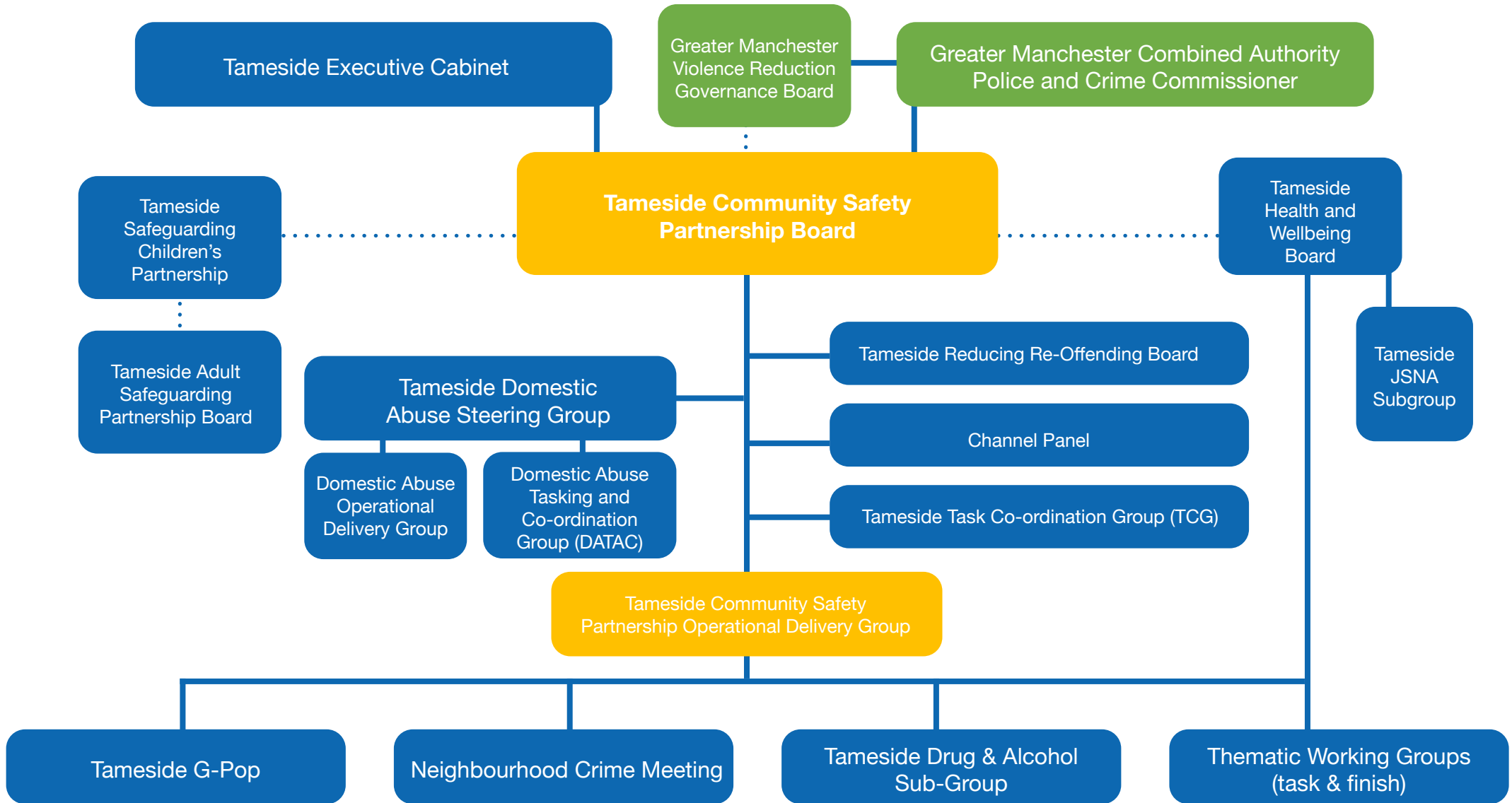
The Tameside Serious Violence Strategy will be delivered in partnership by the specified authorities who sit on the Community Safety Partnership Board for Tameside. Ongoing delivery and monitoring of progress against the strategy will sit with the Community Safety Partnership Board, where regular updates will be provided and work progressed. This oversight will ensure that the requirements of the legislation are fulfilled, including those under the Crime and Disorder Act. This will also foster a partnership approach to achieving the ambitions set out in this strategy.

These governance arrangements will oversee the implementation of a public health approach and drive to support partnership working to ensure visibility for overlapping areas such as safeguarding, equality, trauma-responsive service and domestic abuse. All arrangements for delivery of the duty in Tameside will sit with the Community Safety Partnership Board and, while there is not a named coordinator for serious violence in Tameside, capacity and resource will be drawn from across the membership of this group, which includes all the specified authorities for Tameside.

Data will be monitored via an outcomes framework which sits with the Tameside Community Safety Partnership Board and is reviewed on a regular basis.



Figure 1 – Tameside Serious Violence Governance



Key Drivers of Serious Violence in Tameside





Serious Violence in Tameside 2023

Deprivation

28th most deprived local authority out of 317 local authorities in England.

Poverty

- Increased Adverse Childhood Experiences (ACEs)
- 45% lone-parents are in poverty.
- Higher proportion of low-income jobs.

Wider Determinants

- Lone parent households.
- Not in education employment or training (NEETs)
- Median incomes
- Educational attainment.

Violent Crime

Tameside has seen increases in all reported violent crimes and on an upward trend. This is also the same for the number of attendances to hospital for violence related injuries.

Alcohol and Substance Misuse

- More licensed premises per square km than in the region or nationally.
- Majority of violent crime correlates with the hours when licensed premises are open.

Protected Characteristics

- Higher proportion of the population live with a disability.
- Over-representative population from ethnic minority communities for both victims and perpetrators of violent crime.

Location

Most prevalent around Town Centre locations including Ashton-under-Lyne, Stalybridge, Hyde and Hattersley Town Centres.

Victims

Young males (under 16 years of age) are over-represented in a number of violent crime measures both as victims and perpetrators.

Children & Young People

- High rate of suspensions and permanent exclusions.
- More serious violent offences within the Youth Justice System.

Possession of Weapons

Disproportionately higher compared to the rest of Greater Manchester, linked to Domestic Abuse and associated with young males.

Domestic Abuse

- High-risk domestic abuse has high prevalence in Tameside.
- A high proportion of violent crime, particularly knife crime is associated with Domestic Abuse in Tameside.

Self-directed Violence

The rate of self-harm in Tameside remains significantly worse than the national average.

Personal Robbery

Lower in Tameside than expected. Males are more likely to be a victim and crimes take place in Town Centres.

Safeguarding and Ageing Well

Increases in adult safeguarding referrals have been seen in the last few years and may be linked to residents facing multi-disadvantage and complex care issues.



Tameside Priorities: Tackling Serious Violence



Five priority areas are outlined below for the actions that will be taken as part of the strategy to prevent and reduce serious violence in Tameside over the next five years. These five priorities align to the priorities set in the Greater Manchester Greater Than Violence Strategy, however the actions under each priority area are specific to Tameside, based on the evidence and findings from the Serious Violence Strategic Needs Assessment.

For the actions committed to below, 'we' refers to the specified authorities for Tameside, all of which are represented at the Tameside Community Safety Partnership Board, which is the oversight group where this work will sit and be delivered and monitored.

Priority 1: Community-Led Approach

- We will develop an approach to having ongoing conversations with people across Tameside with lived experience of both serious violence and the main risk factors for violence. This will explore what serious violence means to local people and how people can be empowered to co-design solutions to prevent and reduce violence.

- We will produce an engagement plan including detail on how specified authorities will speak to the community to help inform local service delivery. This will include engagement with education settings and prisons.
- We will prioritise speaking to groups who are at greatest risk, including young people and young males, who are more likely to be both victims and perpetrators of violent crime.

Priority 2: Early and Timely Intervention

- We will continue to prioritise support for children and young people and their families, as young people are at greatest risk of being victims of violence. This will include prioritising those who are at greatest risk of being targeted by adults, older peers and others within their own communities.
- We will develop targeted support for younger pregnant women and mothers, who may be at increased risk of domestic abuse and wider forms of violence.
- We will develop targeted support for lone parents on lower incomes, particularly young women. This will be across the prevention spectrum, from contraception through to parenting, welfare and employment support.
- We will embed early approaches to tackle problematic behaviours which can escalate into violence with a focus on behavioural interventions for young people; supporting education in schools around respectful relationships; and tackling misogyny and violence against women & girls (VAWG).

- We will join up delivery of Family Hubs with the Building Resilience, Tackling Poverty Strategy for Tameside to improve access to support to alleviate poverty for families across Tameside.
- We will tackle alcohol availability as a risk factor for serious violence across Tameside including a full review of evidence to support cumulative impact policies for alcohol licensing; and a review of the Public Health representations made to the alcohol licensing panel in Tameside.
- We will continue to strive for good attendance and engagement with education settings from young people across Tameside, via the Tameside Attendance Strategy. This will include reducing the proportion falling out of education, employment or training post-16 (NEET), reducing suspensions and permanent exclusions, and tackling the early signs of violent behaviour.
- We will foster a culture of sharing best practice relating to the programmes that are in place in Tameside to tackle serious violence, which show evidence that they are working. This will include collaboration across the Tameside Community Safety Partnership, and with neighbouring GM boroughs, including the GM VRU.
- We will work across all local partners to develop an outcomes dashboard to monitor key metrics and outcomes relating to serious violence. This will include improving the collection and analysis of relevant data to better inform the situation with high risk issues in Tameside including sexual violence and weapons offences.
- We will do further work to understand the impact of the implementation of the Greater Manchester Adolescent Safeguarding Framework in Tameside (as one of the three pilot areas across GM alongside Trafford and Stockport) and support wider delivery across GM.

Priority 3: Partnerships for Change

- We will continue to support and engage with the work of the GM Violence Reduction Unit, particularly engaging with the community-led aspects of work.
- We will hold joint sessions with other system Boards and groups with shared goals around work to tackle serious violence including the Health & Wellbeing Board; Mental Health, Learning Disabilities & Autism Partnership Group; Inequalities Reference Group; Children's Safeguarding Partnership; and Adults Safeguarding Partnership Board.

Priority 4: Equality, Equity and Justice

- We will provide and promote targeted services and interventions for individuals who need extra help.
- We will work with the Tameside Adults Safeguarding Partnership Board to better understand the situation and needs of people who live with multiple-disadvantage. The goal will be to have better, trauma-responsive partnership approaches in place to support individuals.
- We will target specific support for those in contact with probation services who have committed violent crimes to reduce re-offending. Particular needs in this group include substance misuse issues, which will be a focus for local drug and alcohol treatment services.
- We will raise aspirations of young people by working across public, private, business and voluntary sectors to create accessible opportunities for volunteering, internships, apprenticeships and work across the borough.
- We will strengthen relationships between and with faith groups to increase visibility and accountability regarding their role in reducing violence, particularly in relation to young people from ethnic minority communities.
- Greater Manchester Police will conduct stop and search, removing knives and weapons off the streets in an intelligence-led and proportionate manner, including a focus on young people and considering domestic abuse perpetrators, based on the insight in Tameside.

Priority 5: Trauma Responsive Support for Communities in Tameside

- We will continue to develop promotional awareness raising campaigns which sensitively communicate the dangers of carrying weapons.
- We will continue to provide supportive, trauma-responsive services to tackle drug and alcohol harms across Tameside, given the high levels of alcohol harm in the borough and the high rate of violent crime with drugs and alcohol as a risk factor.
- We will continue to prioritise work to tackle all forms of domestic abuse across Tameside, with a particular focus on addressing the risks of domestic abuse of older victims, based on increasing trends of abuse in this age group.
- We will put in place a range of trauma-responsive interventions and awareness raising to support groups who are at greater risk of being victims of serious violence including young males; people living with physical and learning disabilities; drug users; ethnic minority communities; and people in other minority groups including LGBTQ+.
- We will put in place a programme of work involving awareness raising, engagement and enforcement around the main town centres in Tameside, particularly Ashton-under-Lyne town centre, Stalybridge town centre, Hyde town centre and Hattersley town centre, in response to the high proportion of violent crime reported in these locations.

- We will foster a greater understanding across all partners regarding the relationship between violence and neurodiversity, special education needs and/or disability so that collaborative solutions can be put in place.
- We will support the embedding of trauma informed approaches across voluntary services and community organisations across Tameside, particularly those that work with children & young people.



References

- Greater Manchester Violence Reduction Unit. (2023). Greater Manchester Serious Violence Action Plan. Retrieved from GMCA: https://www.greatermanchester-ca.gov.uk/media/3106/gm_violence_reduction_plan_final_amends_final.pdf
- Home Office. (2020, September). Serious Violence Reduction Orders. Retrieved from Gov.uk: https://assets.publishing.service.gov.uk/government/uploads/system/uploads/attachment_data/file/917277/SVRO_consultation.pdf
- Home Office. (2022). Serious Violence Duty. Retrieved from Gov.uk: <https://www.gov.uk/government/publications/serious-violence-duty>
- WHO. (2002, October). World Report on Violence and Health.

